



RESIDENTIAL

SALES | LETTINGS | PROPERTY MANAGEMENT

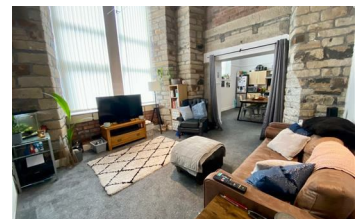


6 Saville Court, Huddersfield, HD3 4JT

£110,000



OFFERED FOR SALE AS AN INVESTMENT PURCHASE "Are You Looking For A Stunning Apartment? "LOOKING TO HAVE A BUY TO LET" Now offered FOR SALE in this stunning Mill Conversion at Savile Court of Milnsbridge and on the edges of Longwood, ADM Residential are pleased to market this tastefully NEWLY decorated two true double bedroomed apartment which is situated in a charming converted mill. Ideally set on the ground floor, offering an abundance of charming features including stunning exposed stone walls and high ceiling, large windows which allow a flood of natural light. Located close to all village amenities and easy access towards Marsh Paddock and Lindley with the M62 Motorway Networks a few minutes away, popular transport links and just a few miles to Huddersfield town centre. There are well maintained communal entrances, staircase and lift. The apartment boasts



- Luxury Apartment
- Two Double Bedrooms
- Modern Kitchen/Dining
- Secure Intercom Entry
- Great Location
- Ground Floor Access
- Open Plan Living
- Two Bathrooms
- Parking Space

55 Market Street, Milnsbridge, Huddersfield, HD3 4HZ
T: 01484 644555 | E: sales@admresidential.co.uk
www.admresidential.co.uk

